

Intermediate Unit 1



Benefits Overview

Erik Bower

State Manager

Eastern Regional Branch Office

7132 Office Park Dr.

West Chester, OH 45069

877-518-2337 • 513-701-3171

americanfidelity.com

AMERICAN FIDELITY 
a different opinion

Intermediate Unit 1

Dear Intermediate Unit 1 employee:

Out of all the items on your to-do list, enrolling in your employer's benefits program likely isn't at the top. But it's more significant than you may think, as protecting yourself and your family is vitally important.

That's where we come in. American Fidelity provides financial solutions to employees just like you, and we offer benefits tailored for your specific needs.

Your benefit program includes a Section 125 Plan, which not only allows you to pre-tax premiums for qualified benefits, it also allows you to enjoy a tax-saving way to pay for eligible medical or dependent day care expenses with a reimbursement account that deducts pre-tax dollars from your paycheck. Simply choose the amount to be deducted, and the funds are set aside to be used for eligible expenses throughout the year. You can choose from several types of plans.

You only have one chance each year to get educated on all available benefit options and choose the ones that best meet your needs. And because benefits can be confusing, we're here to help you every step of the way. We'll walk you through all available options, answer any questions you may have, and help you build a package that's perfect for you.

An interest form is attached for you to complete and return, and a representative will touch base with you soon to discuss your available options.

Sincerely,

Erik Bower, State Manager,

American Fidelity Assurance Company

For more information, contact your local American Fidelity representative.

*American Fidelity, a different opinion
in employee benefits.*

Erik Bower
State Manager
Eastern Regional Branch Office
7132 Office Park Dr.
West Chester, OH 45069
877-518-2337 • 513-701-3171

americanfidelity.com

AMERICAN FIDELITY 
a different opinion

An Easy Way to Pay for Expenses

A Section 125 Plan provides a tax-saving way to pay for eligible medical or dependent care expenses. The funds are automatically deducted from your paycheck before income tax is applied. Simply choose the amount to be deducted, and the funds are set aside to be used for eligible expenses throughout the year.

Here's How It Works

A Section 125 Plan reduces your tax and increases your spendable income by allowing you to deduct the cost of eligible benefits from your earnings before tax. Plus, the plan is available to you at no cost, and you're already eligible. All you have to do is enroll.

Is It Right for Me?

The savings you may experience with a Section 125 Plan are outlined below. By utilizing the Section 125 Plan, Jane would have \$70 more every month to apply toward her insurance benefits or other needs. That's a savings of \$840 a year.

Ready to Enroll?

To enroll in the Section 125 Plan, just complete an election form. You'll receive plenty of advance notice when it's time to enroll. And, in most cases, you must re-enroll each year to keep participating in the plan.

How to Make Election Changes

You're able to change your election each year during your annual benefits enrollment, but the only time Internal Revenue Code regulations allow you to make a change during the plan year itself is if you experience a qualified event. Some examples include:

- Change in legal married status
- Change in number of dependents
- Termination or commencement of employment
- Dependent satisfies or ceases to satisfy dependent eligibility requirements
- Change in residence or worksite that affects eligibility for coverage

These examples may not be all-inclusive. Please contact your employer for guidance with your specific situation.

Employee Name: Smith, Jane

SSN: 123-45-XXXX

Employee Number: 0515

Payment Date: 1/1/17

Period Begin Date: 1/30/17

Earnings & Hours

Without S125

Monthly Salary	\$2,000
Medical Expenses	N/A
Taxable Gross	\$2,000
Taxes (Federal & State @ 20%)	-\$400
Less Estimated FICA (7.65%)	-\$153
Medical Deductions	-\$250
Take Home Pay	\$1,197

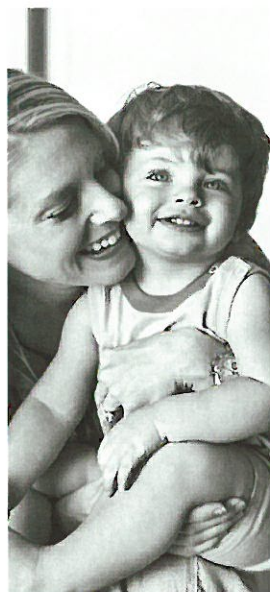
With S125

Monthly Salary	\$2,000
Medical Expenses	-\$250
Taxable Gross	\$1,750
Taxes (Federal & State @ 20%)	-\$350
Less Estimated FICA (7.65%)	-\$133
Medical Deductions	N/A
Take Home Pay	\$1,267

That's a
difference
of \$70!

Where allowable by law. If you are subject to FICA taxes, there might be a reduction in your social security benefit due to the reduction of FICA contributions. Example is hypothetical for illustrative purposes only. Please consult your tax advisor for actual tax savings.

Help Save for Medical Expenses



Are you looking for a way to reduce your taxable income and help pay for medical and dependent care expenses? Reimbursement accounts can do just that.

With these accounts, you'll enjoy a money-saving way to pay for eligible medical or dependent care expenses with pre-tax dollars from your paycheck.

Just choose the amount to be deducted, and the funds are set aside to be used for expenses throughout the year. It's that easy.

Here's How They Work

A **Dependent Care Account (DCA)** allows you to set aside pre-tax dollars to reimburse yourself for eligible dependent care expenses. Because your money goes into the account before income tax is withheld, you pay less in tax and have more disposable income. You may allocate up to \$5,000 per tax year for reimbursement of eligible dependent care services (or \$2,500 if you are married and file a separate tax return).

A **Healthcare Flexible Spending Account (HCFSA)** can save you money by allowing you to set aside part of your pay, on a pre-tax basis, to reimburse yourself for eligible medical expenses such as copayments, deductibles, prescriptions, and more. The maximum amount allowed to contribute into this account is \$2,700 per calendar year. (Please see your employer for the maximum amount allowed by your plan.)

Fast, Easy Reimbursements

If you're interested in either of these accounts, we're happy to set up your account for direct deposit. You can either have your reimbursements deposited straight into your bank account or receive a check by mail – it's entirely up to you.

If you don't file sufficient claims for reimbursement, you could lose the unused amount remaining in your account at the end of the plan year. This is often referred to as the "use-or-lose" rule.

Your employer may offer a carryover of up to \$500 each plan year or a grace period, which is a period of time after the plan year ends where you may incur expenses and be reimbursed from the remaining balance in your previous year's account.

Examples of Eligible Expenses

Acupuncture	Invitro fertilization	Physical therapy provided by licensed therapist
Alcohol/drug rehab	Laser eye surgery	Practical nurse
Anesthetist	Midwife	Psychiatrist
Artificial limbs/teeth	Optometrist	Psychologist
Chiropractor	Orthodontia*	Stop-smoking program
Dental care	Out-patient care	Transportation expenses relative to medical care based on IRS standard mileage allowance
Eye exam/eyeglasses/contact lenses	OTC drugs and medicines for treatment of a medical condition**	Weight loss program for obesity***
Hearing aids/batteries	Pediatrician	
Insulin		

Examples of Ineligible Expenses

Capital expenditures
Cosmetic procedures
Exercise equipment
Insurance premiums
Mattresses/pillows
Personal use items
Teeth whitening

*Service must have been incurred or already paid.

**Will require a medical practitioner's prescription.

***May need doctor's statement for medical necessity.

AMERICAN FIDELITY
a different opinion



Disability Income Insurance



If you were suddenly faced without a paycheck, would you be fully prepared? Could you afford your expenses while maintaining your current lifestyle?

One of the most important assets a person possesses is the ability to earn an income. Disability Income Insurance from American Fidelity is a cost-effective solution designed to help protect you if you become disabled and cannot work due to a covered injury or sickness.

Here's How It Works

In the simplest of terms, this plan is insurance that pays a cash benefit and is designed to help protect you if you can't work due to a covered injury or sickness. It pays a monthly benefit amount based on a percentage of your gross income, so you may continue to afford everyday living expenses.

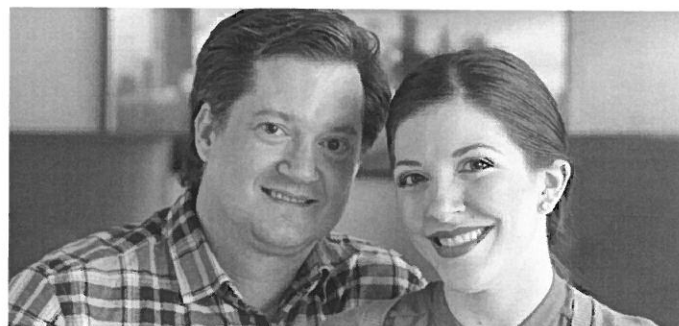
Features

- Benefits are paid directly to you, so you can use your benefit for any expense you wish.
- Payments made year-round.
- Several elimination periods to choose from.
- Premiums are not required while you are disabled, based on the length of your disability.

These products may contain limitations, exclusions, and waiting periods. Applicant's eligibility for this program may be subject to insurability.

SB-30432-0716

Cancer Insurance



If you were unexpectedly faced with a cancer diagnosis, will your major medical insurance be enough? Even with a good plan, the out-of-pocket costs of treatment, such as travel, child care, and loss of income, can be expensive. American Fidelity's **Limited Benefit Cancer Insurance** may help.

Here's How It Works

If cancer touches someone in your family, this plan may help ease the impact on your finances. Benefit payments are made directly to you, allowing you to pay for expenses like copayments, hospital stays, and house and car payments.

Features

- Benefit payments made directly to you, so you can use your benefit for any expense you wish.
- Choose the coverage option that best fits your lifestyle and financial needs.
- More than 25 plan benefits available for cancer treatment, including wellness and early detection.
- Radiation, chemo, and hormone therapy.
- Covers transportation and lodging.
- You own the policy, so you can take it with you if you change jobs.

Not all riders may be available in every state. Limitations, exclusions, and waiting periods may apply. This product is inappropriate for people who are eligible for Medicaid coverage.

SB-30430-0716

Accident Only Insurance



Accidents are inevitable. Even though you can't always prepare for unforeseen events, you can plan ahead. A **Limited Benefit Accident Only Insurance** plan may help ease the impact on your finances.

American Fidelity's Accident Only Insurance is designed to help cover some of the expenses that can result from a covered accident, and benefit payments are made directly to you.

Here's How It Works

This plan provides 24-hour coverage for accidents that occur both on and off the job and can help offset your medical expenses. There are over 30 plan benefits available, and coverage may also extend to your family.

Features

- Choose the coverage option that best fits your lifestyle and financial needs.
- Apply with no medical questions asked.
- The plan pays an annual Wellness Benefit for one Covered Person to receive a routine physical exam, including immunizations and preventive testing.
- The plan pays a benefit when an Accidental Death or Dismemberment occurs within 90 days of a covered accident.
- Policy is guaranteed renewable for as long as premiums are paid as required.
- You own the policy, so you can take it with you if you change jobs.

Limitations, exclusions, and waiting periods may apply. Not all products and benefits may be available in all states. This product is inappropriate for people who are eligible for Medicaid coverage.

SB-30426-0716

Group Critical Illness Insurance



Although your traditional medical insurance may help pay for expenses directly associated with a critical illness, how will you cover indirect expenses?

American Fidelity's **Limited Benefit Group Critical Illness Insurance** can assist with the expenses that may not be covered by major medical insurance, allowing you and your family to focus on what matters the most – your recovery.

Here's How It Works

If you experience an event such as a heart attack or stroke, Critical Illness Insurance may help. It pays a lump sum amount to help with expenses that may not be covered by major medical insurance – house payments, everyday expenses, lost income, and more.

Features

- Receive an annual benefit for one covered health screening test per year, such as a stress test, echo cardiogram, blood glucose testing, or up to five other routine tests.
- Choose from three coverage amount options, \$10,000, \$20,000, or \$30,000, at the time of application.
- Benefits are paid directly to you, so you can use your benefit for any expense you wish.

Only offered on an after tax-basis. Limitations, exclusions, and waiting periods may apply. This product is not available under Section 125 Plans. This product is inappropriate for people who are eligible for Medicaid coverage.

SB-30431-0716

Whole Life Insurance



It's important to prepare for the unexpected and help ensure your loved ones will be financially protected in the event of a tragedy. Your life insurance benefit can help replace your income and help your family meet important financial needs like funeral expenses, everyday living costs, and college.

Here's How It Works

American Fidelity's Whole Life Insurance provides protection for your entire life. American Fidelity's Whole Life Insurance provides protection for your entire life to age 121.

Features

- You own the policy, so you can take it with you to a different job or in retirement.
- Rates based on issue age and guaranteed not to increase during the life of the policy.
- Multiple coverage options available for you, your spouse, children, and grandchildren.
- Provides full cash value flexibility, including the ability to access cash or stop paying premiums and maintain some coverage.

Provided premiums are paid as defined in the policy. Limitations, exclusions, and waiting periods may apply. Not generally qualified benefits under Section 125 Plans.

SB-30510-1217

Term Life Insurance



Life Insurance is an important piece of a strong financial plan. While there is no complete replacement for the loss of a loved one, American Fidelity's Term Life Insurance can help protect your family in your absence.

It provides short-term coverage at a competitive price. For those on a limited budget, Term Life Insurance can help fill temporary needs.

Here's How It Works

A Term Life Insurance policy may help supplement your existing coverage and may assist in meeting financial demands, should you need it. Plus, this is an individual policy, which means you own it and can take it with you to a different job or in retirement.

Features

- Choose from a 10, 20, or 30 year term period, based on your specific needs.
- Death benefit coverage starts as soon as you sign the application.*
- You own the policy, so you can take it with you to a different job or in retirement.
- The death benefit amount is generally paid tax free.

**Interim coverage for death will be in force from the date your application is signed if on such date the proposed insured is insurable per our underwriting guidelines for the requested coverage in accordance with the terms of the policy. This interim coverage for death will remain in force until the earlier of: 1) the date a policy becomes effective; 2) the date we decline the application; or 3) the date we notify the proposed insured that they are ineligible for interim coverage. The employee and/or spouse must remain actively at work during the interim coverage period. If the death of the proposed insured occurs during the interim coverage period, the first month's premium will be subtracted from the policy proceeds. Interim coverage is only for death benefits under the base policy, Children's Term Rider and Spouse Term Rider. No interim coverage benefits are available under any Waiver of Premium Rider, Accidental Death and Dismemberment Rider, or Accelerated Benefit Rider for Long Term Illness.*

Rates are adjusted upon renewal. Please consult your tax advisor for your specific situation. Limitations, exclusions, and waiting periods may apply. Not generally qualified benefits under Section 125 Plans.

SB-30439-1217

Intermediate Unit 1

Interest Form for New Employees

Please mark the appropriate line and/or boxes and return to Erik Bower.

☐ I would like more information about pre-taxing my benefits under the Section 125 Plan.

☐ I would like information about the following benefits.

- | | |
|---|--|
| <input type="checkbox"/> Disability Income Insurance* | <input type="checkbox"/> Critical Illness Insurance*,+,# |
| <input type="checkbox"/> Cancer Insurance*,+ | <input type="checkbox"/> Whole Life Insurance*,** |
| <input type="checkbox"/> Accident Only Insurance*,+ | <input type="checkbox"/> Term Life Insurance*,** |

☐ I would like more information on the following reimbursement accounts available through Section 125:

- ☐ Healthcare Flexible Spending Account maximum \$2,700/plan year.
- ☐ Dependent Care Account maximum \$5,000/plan year.***

* These products may contain limitations, exclusions, and waiting periods.

** Not generally qualified benefits under Section 125 Plans.

+ **This product is inappropriate for people who are eligible for Medicaid coverage.**

+++ Maximum \$2,500 if you are married and file a separate tax return.

#Group Critical Illness is only offered on an after-tax basis.

I'd like American Fidelity Assurance Company to contact me about benefits. With my signature below, I understand that someone will call me to discuss my options and/or schedule my appointment.

Print Name

Signature*

Job Location

Classified/Certificated/Management

Phone

Email Address

Date of Hire

*With my signature, I consent to being contacted, including by phone, regardless of my status on any do not call list.

Erik Bower

State Manager

Eastern Regional Branch Office

7132 Office Park Dr.

West Chester, OH 45069

877-518-2337 • 513-701-3171

AMERICAN FIDELITY

a different opinion



americanfidelity.com